



Northern  
Grain Belt Ports



# We Were Off The Map

Keep in touch



EPA's Ports Initiative website and newsletter sign-up:

[www.epa.gov/ports-initiative](http://www.epa.gov/ports-initiative)

For questions or input on the Clean Ports Program in the Inflation Reduction Act:

[cleanports@epa.gov](mailto:cleanports@epa.gov)

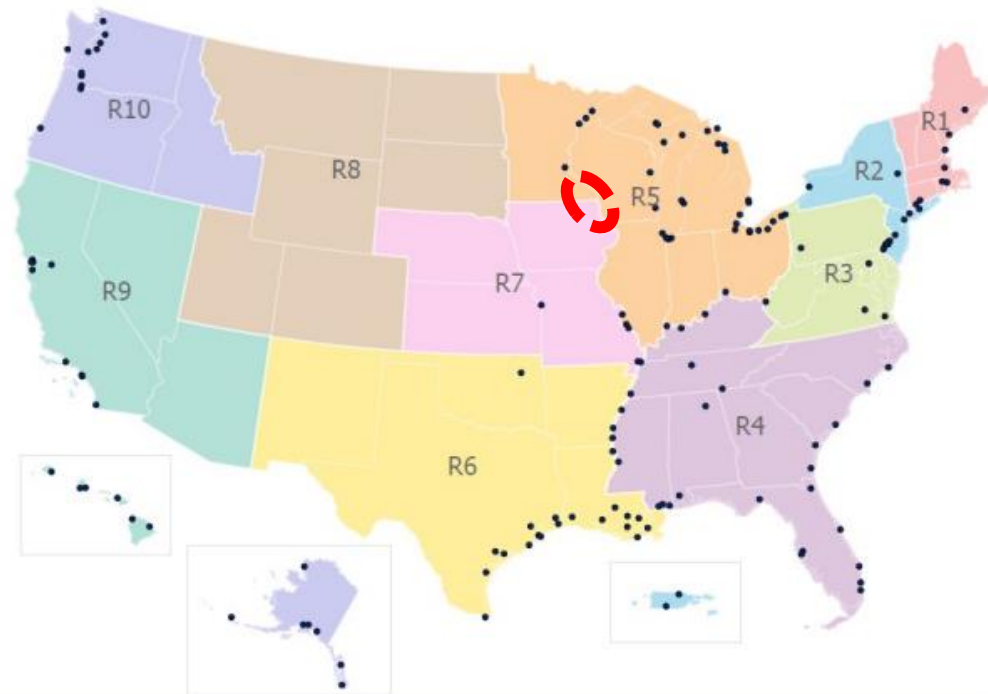
EPA Regional Office contacts:

[www.epa.gov/ports-initiative/regional-epa-ports-initiative-contacts](http://www.epa.gov/ports-initiative/regional-epa-ports-initiative-contacts)

Tony Maietta: [maietta.anthony@epa.gov](mailto:maietta.anthony@epa.gov)

Frank Acevedo: [acevedo.francisco@epa.gov](mailto:acevedo.francisco@epa.gov)

## Army Corps "Principal Ports" and EPA Regions





# On The U.S. Ports Map Now



Ports and Port Statistical Areas | Ports and Port Statistical Areas | GeoSpatial

[https://geospatial-usace.opendata.arcgis.com/datasets/b7fd6cec8d8c43e4a141d24170e6d82f\\_0/...](https://geospatial-usace.opendata.arcgis.com/datasets/b7fd6cec8d8c43e4a141d24170e6d82f_0/)

U.S. Army Corps of Engineers Geospatial

## Ports and Port Statistical Areas

Private Member  
Private Organization

### Summary

Per Engineering Regulation 1130-2-520, the U.S. Army Corps of Engineers' Navigation Data Center is responsible to collect, compile, publish, and disseminate waterborne commerce statistics. This task has subsequently been charged to the Waterborne Commerce Statistics Center to perform. Performance of this work is in accordance with the Rivers and Harbors Appropriation Act of 1922. Included in this work is the definition of

[Read More](#)

[View Full Details](#)

[Download](#)

### Details

Dataset  
Feature Layer

September 18, 2023  
Info Updated

I want to use this



Esri, HERE, Garmin, USGS, EPA | Esri, HERE

Powered by Esri

[https://geospatial-usace.opendata.arcgis.com/datasets/b7fd6cec8d8c43e4a141d24170e6d82f\\_0/explore?location=36.349287%2C-98.856999%2C5.00](https://geospatial-usace.opendata.arcgis.com/datasets/b7fd6cec8d8c43e4a141d24170e6d82f_0/explore?location=36.349287%2C-98.856999%2C5.00)



# Corn Belt Ports

(Port Regions/Port Statistical Areas)

Ports  
Within the  
Lock & Dam  
System



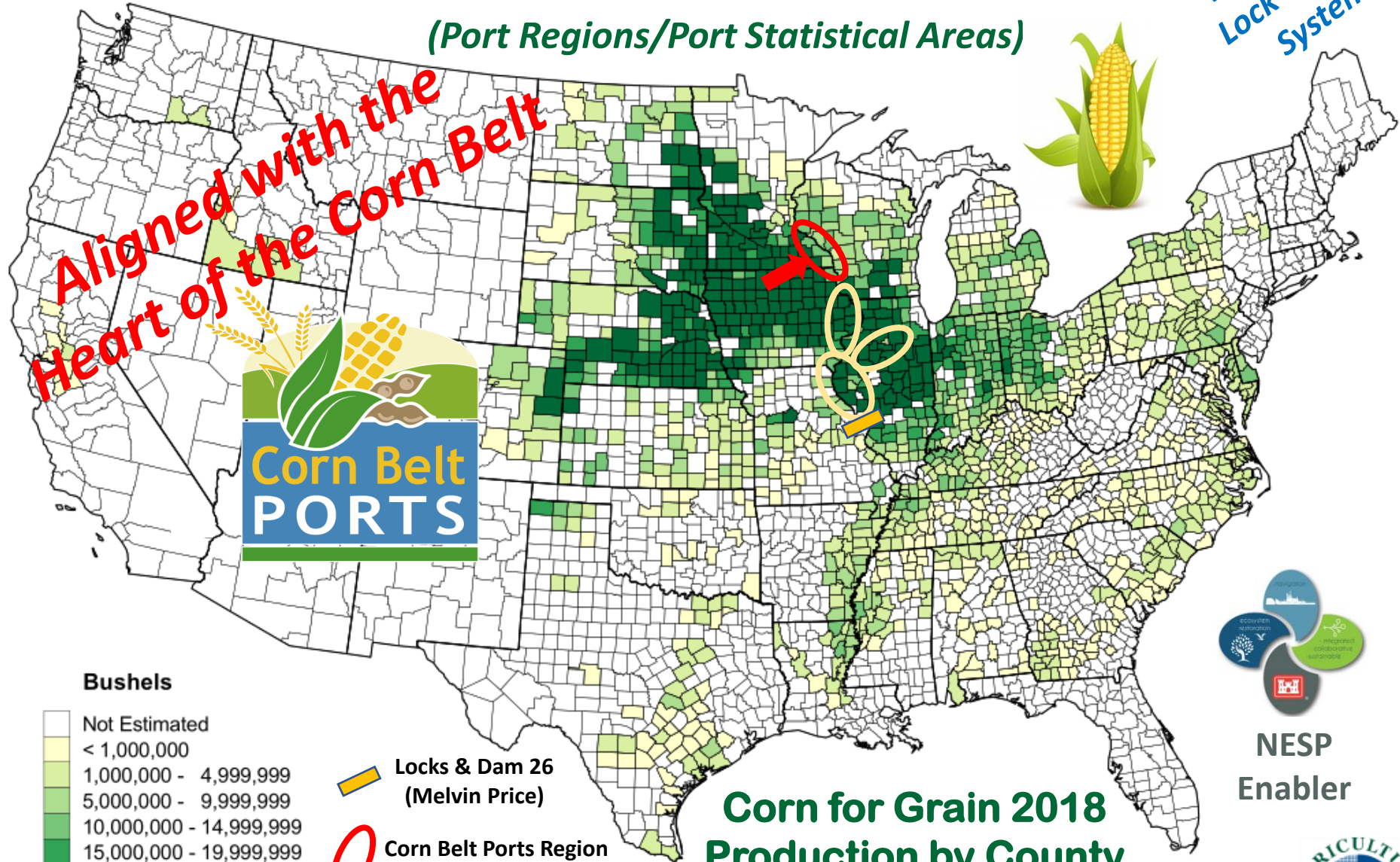
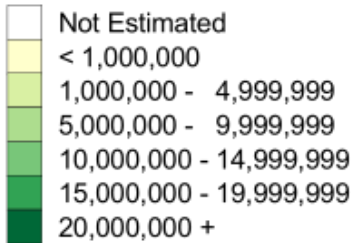
Aligned with the  
Heart of the Corn Belt



 Locks & Dam 26  
(Melvin Price)

 Corn Belt Ports Region  
(A Top 50 US Port)

## Bushels



**Corn for Grain 2018  
Production by County  
For Selected States**



NESP  
Enabler





# Northern Grain Belt Ports Leadership

**Safety**

**Economic Development**

**Docks**

**Dredge Material Management/ Placement**

**Shoreline Protection**

**Supply Chain**

**Barge Mooring Sites Locks and Dams**

**Channel Training Structures**

**Aquatic Habitat**

**Recreation Sites**

**Hydropower**

**Barge Terminals**

**Water Quality Infrastructure**

**Tourism**

**Chronic Dredging Sites**

**Barge Fleeting Areas**

**Flood Risk Reduction Infrastructure**

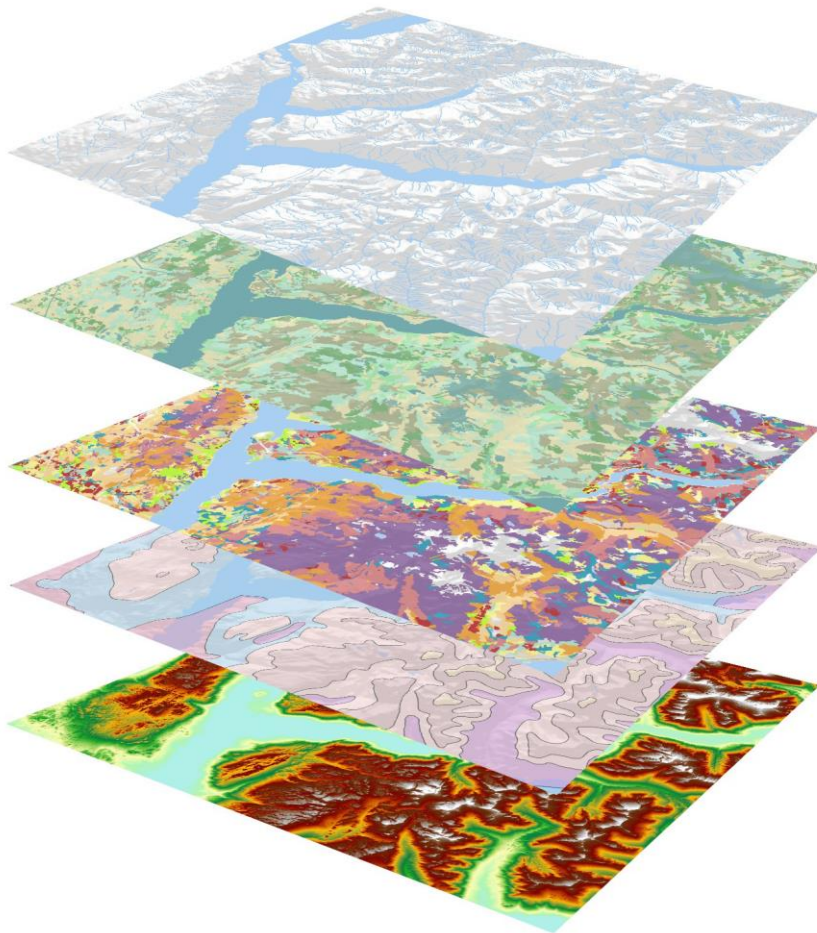
**Small Boat Harbors**

**Natural Infrastructure**

**Multi-Modal Transportation Infrastructure**



# Government Port Alignment



- ✓ **Federal Government**
- State Governments
- ✓ **Regional Planning Agency (ies)**
- ✓ **Counties**
- ✓ **City Ports**

# MRCTI



Since 2012, Mississippi River Cities and Towns Initiative has been promoting economic and environmental security and stability along the Mississippi River Corridor.