

# NAVIGATION AND ECOSYSTEM SUSTAINABILITY PROGRAM (NESP)

Northern Grain Belt Ports  
5 October 2023

Andrew Goodall, P.E., PMP  
NESP Regional Program  
Manager  
USACE Rock Island District



U.S. ARMY



US Army Corps  
of Engineers®

## NESP Coordinating Committee Meeting

- Scheduled for 9 November in the Quad Cities.

## Groundbreaking/Ribbon Cutting Events

- A groundbreaking event was held at the Lock 14 mooring cell project on 12 April 2023.
- Groundbreaking events were held on 18 May 2023 at Lock and Dam 22 and Lock and Dam 25 for the fish passage and new lock projects respectively.
- A ribbon cutting event was held at the Pool 2 project on 25 July 2023.

## Ecosystem sustainability projects

- Three current projects in the NGBP area
- Projects include cultural site protection,
- 65% design deliverable under review. Project on schedule for construction contract award in FY24.

## Lock and Dam 22 Fish Passage

- Design activities ongoing, construction contract on schedule for award by September 2024.

## Mooring Facility Construction

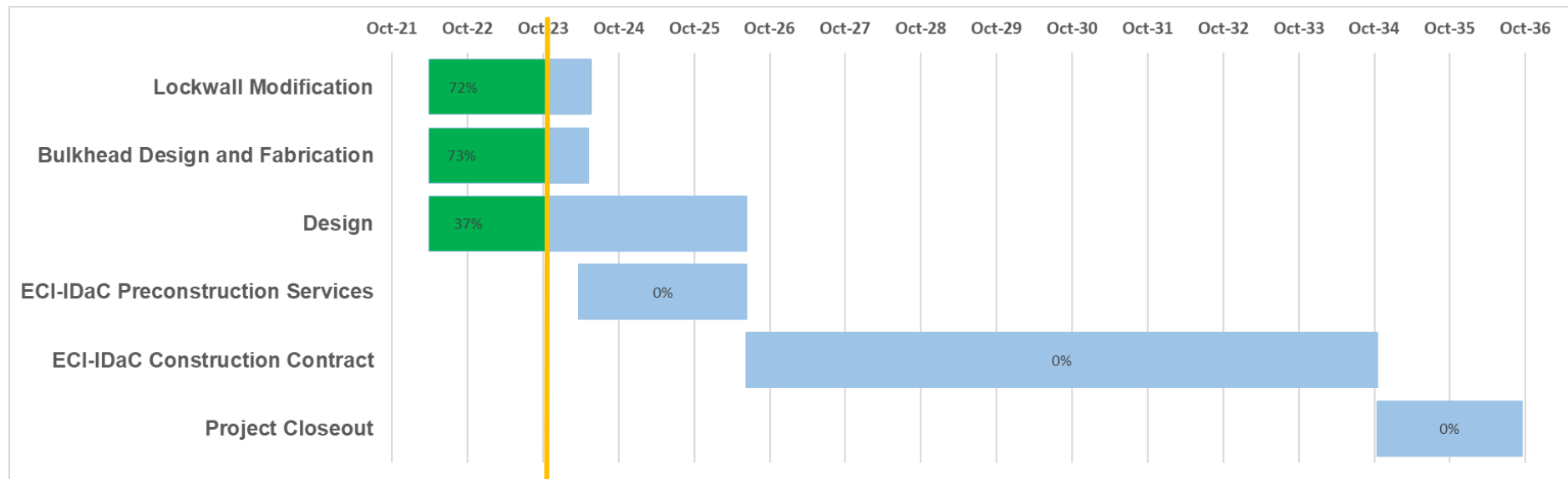
- Design ongoing for 7 mooring facilities
- Three mooring facilities in the NGBP area
- Each mooring facility provides a time savings of 5-10 minutes per lockage

## LaGrange New 1200' Lock

- Design task order for 100% plans and specifications awarded in September 2023.

## Lock 25 New 1200' Lock

- Design and solicitation activities ongoing.



**WE ARE HERE**

Upcoming scheduled items:

- Early Contractor Involvement-Integrated Design and Construction (ECI-IDaC) Preconstruction Services Award in March 2024
- ECI-IDaC Construction Option Award in June 2026
- ECI-IDaC Construction Complete in October 2034

## Navigation

- Mooring cell (7) construction
- LaGrange initial construction contract

## Ecosystem

- Lock and Dam 22 Fish Passage construction funding
- Continued project planning and design
- Partner funding
- Programmatic Activities





U.S. ARMY



US Army Corps of Engineers

# NAVIGATION AND ECOSYSTEM SUSTAINABILITY PROGRAM (NESP)

ST. LOUIS DISTRICT - ROCK ISLAND DISTRICT - ST. LOUIS DISTRICT

## NAVIGATION AND ECOSYSTEM PROJECTS

The Navigation and Ecosystem Sustainability Program (NESP) is a long-term, dual-purpose program that integrates navigation improvements and ecosystem restoration together to provide Upper Mississippi River System once in a generation-type positive impacts.

The primary goals of the program are to increase the capacity and improve the reliability of the inland navigation system while restoring, protecting, and enhancing the environment.

This map only shows projects actively being implemented. NESP includes an additional 5 - 1200' locks, systemic mitigation, and hundreds of ecosystem restoration projects.

<p><b>CONSTRUCTION COMPLETE</b></p> <ul style="list-style-type: none"> <li>1 Pool 2 Wingdam Notching</li> </ul> <p><b>ONGOING CONSTRUCTION</b></p> <ul style="list-style-type: none"> <li>2 Pool 4 Island 4 System Mitigation</li> <li>7 Lock 14 Mooring Cell</li> <li>13 Moore's Towhead System Mitigation</li> <li>20 Lock 25 New 1200' Lock</li> </ul> <p><b>ONGOING DESIGN</b></p> <ul style="list-style-type: none"> <li>14 Lock and Dam 22 Fish Passage</li> <li>Mooring Facilities</li> </ul>	<p><b>CONSTRUCTION / AE DESIGN SERVICE CONTRACT AWARDS IN FISCAL YEAR 2023</b></p> <ul style="list-style-type: none"> <li>8 Andalusia Island Complex Planning</li> <li>9 Starved Rock Breakwater</li> <li>12 LaGrange New 1200' Lock Design</li> <li>16 Alton Pools Islands - Island Protection and Side Channel Restoration</li> <li>17 Twin Island Protection and Enhancement</li> </ul>
<p><b>YEAR 1</b></p> <ul style="list-style-type: none"> <li>4 Johnson Island</li> <li>5 Sny Magill, Effigy Mounds National Monument</li> <li>10 Lee County Islands and Backwaters</li> <li>11 Liverpool Flowing Side Channel</li> <li>18 Clarksville/Carroll Island Side Channel</li> <li>19 Haugens Island Side Channel</li> <li>21 MMR - NWR - Horse Island</li> </ul>	<p><b>ONGOING PROJECT PLANNING</b></p> <p><b>YEAR 2</b></p> <ul style="list-style-type: none"> <li>3 Wacouta Bay</li> <li>Systemic Forest Management</li> <li>6 Sabula Lakes</li> <li>15 Pool 24 Island Restoration - Denmark and Drift Islands Complex</li> <li>22 Middle Mississippi River Stone Dike Alterations Phase 1</li> <li>Water Level Management - Reduce Water Level Fluctuations</li> </ul>

### NESP PARTNERS

